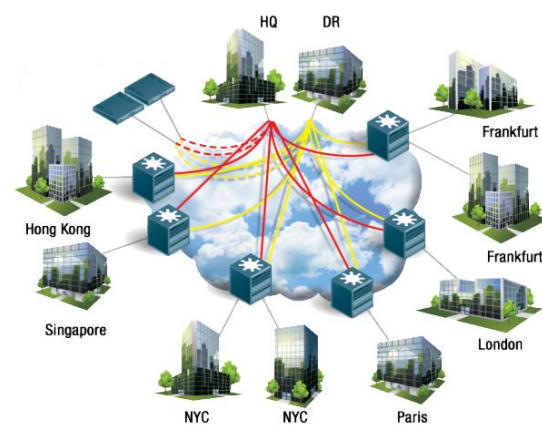


Ethernet is the most widely used and understood technology in the LAN environment. With the latest developments Ethernet has been extended to operate across WAN, simplifying the connectivity of multi-site networks. With our VPLS service organisations can now interconnect multiple remote locations in a seamless, uniform and cost effective manner. One consistent network within LAN and across WAN.



Multi-point Ethernet WAN service reduces an organisation's deployment and operational costs. There is no or very minimal need to make any changes to existing LAN infrastructure to integrate with Ethernet WAN, this greatly reduces the deployment costs. Ethernet LAN and Ethernet WAN is similar, this makes management of the entire infrastructure easy with minimal investment in management platforms and human resource.

Our solution

We can provide multi-point Ethernet across wide geographical locations with bandwidth ranging from 2Mbps to 1Gbps, utilising a range of underlying technology to bring additional flexibility to the service. The utilisation of different underlying technologies is completely transparent to our customer, removing any complexities. Areas where higher capacity is required we can customise to your needs.

We maintain a strong relation with multiple regional network service providers, we are able to interconnect to our network utilising the best service offerings from our suppliers interconnecting regional spans of network to achieve wide reach with the highest level of service and cost reduction.

For customer sites in close proximity that requires high bandwidth connectivity we can construct dedicated scalable network.

Summary

- We can provide Multi-Point service with bandwidth ranging from 2Mbps to 10Gbps.
- Our standard presentation is Ethernet, we can also present circuits over the following formats: E1, E3, DS3, STM-1, STM-4, STM-16, STM-64, 2.5Gbps Wavelength, and 10Gbps Wavelength, LAN-PHY, WAN-PHY.
- We will seamlessly interconnect network segments over different providers to extend your reachability.
- Our close relation with regional service providers allows us to give you a uniform and cost effective solution.
- We provide proactive network management with single point of contact for quick resolution of service effecting issues.
- Our services are offered with strict Service Level Agreement for throughput, latency, and availability.